

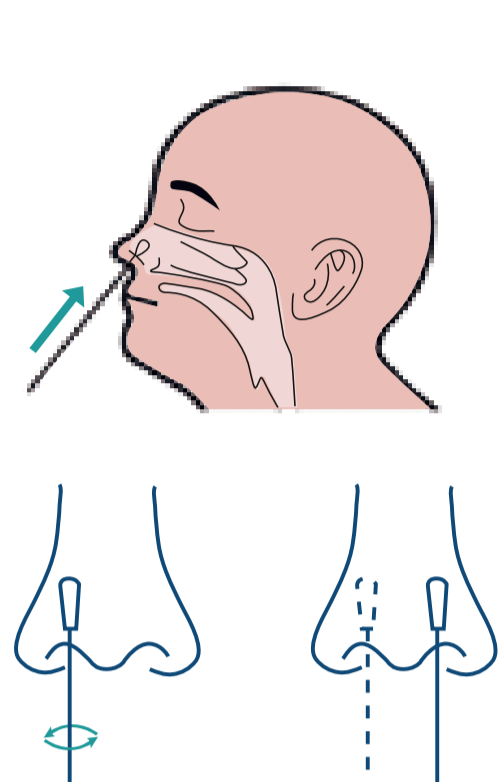


Infinia AG

COVID-19 Antigen-Schnelltestkit (Abstrich)

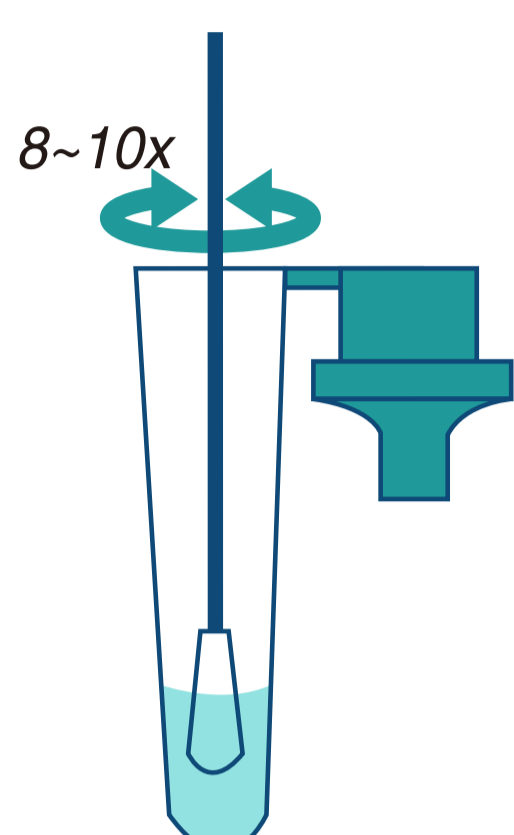


GEBRAUCHSANWEISUNG



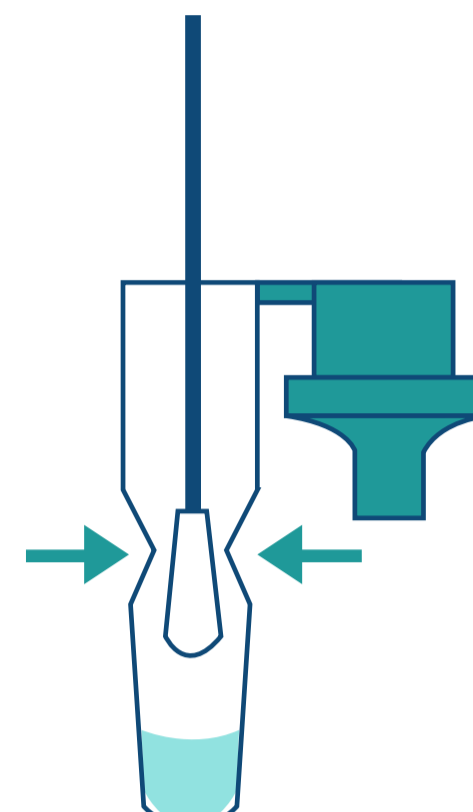
Führen Sie den Nasentupfer in die richtige Tiefe ein und rollen Sie jedes Nasenloch 5-mal

Insert nasal swab to an appropriate depth, roll 5 times in each nostril



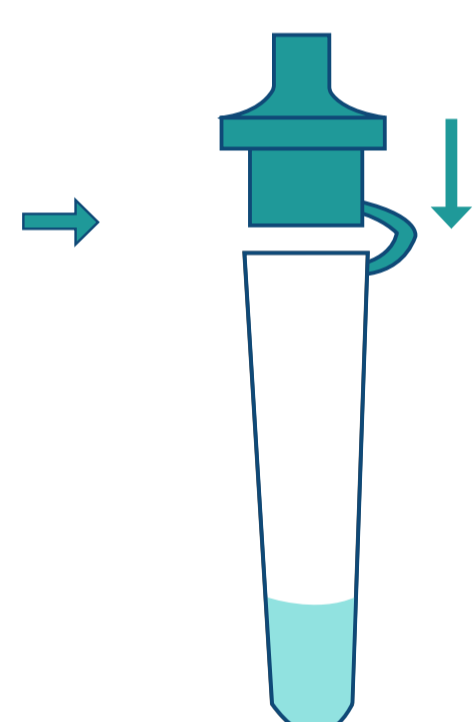
Drehen Sie das Wattestäbchen 8-10 Mal

Rotate the swab 8-10 times



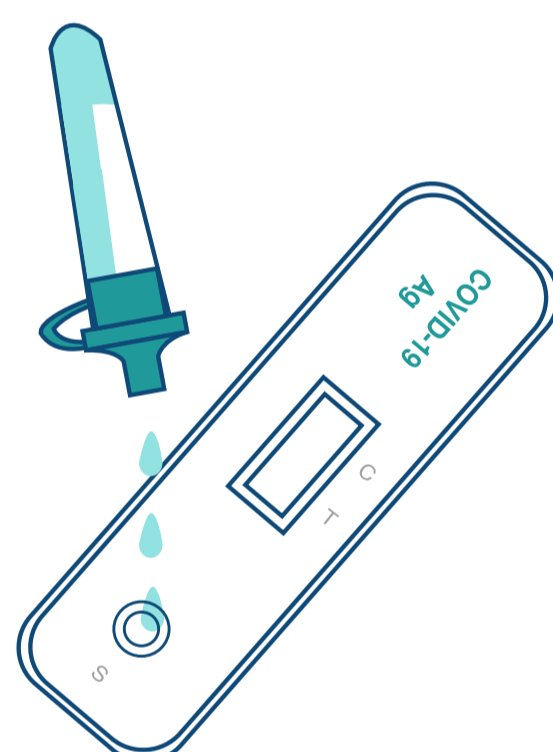
Drücken Sie auf den Tupfer und geben Sie so viel Flüssigkeit wie möglich ab

Press the swab and release as much liquid as possible



Platzieren Sie die Kappe

Place the cap

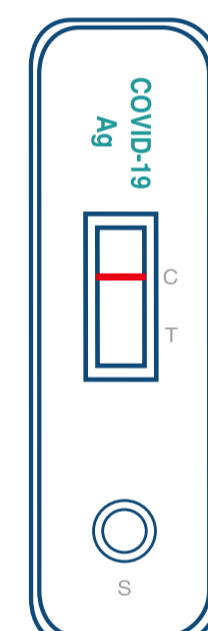


3 Tropfen in die Probenvertiefung geben

Add 3 drops to sample well(S)



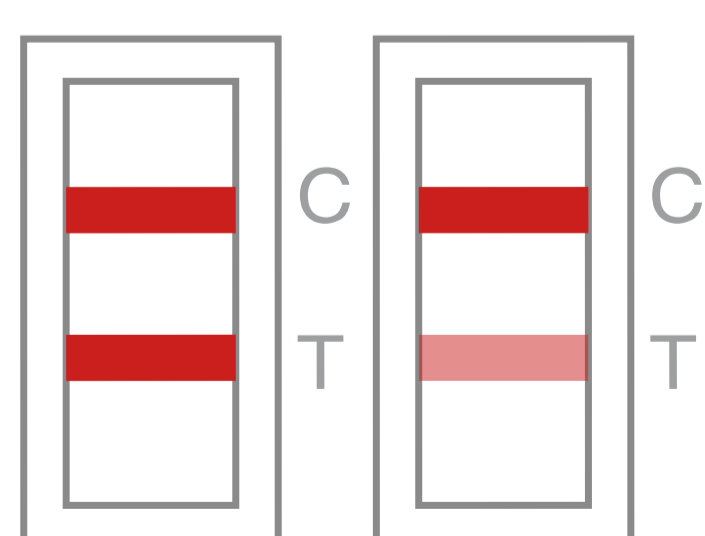
10~15 Min



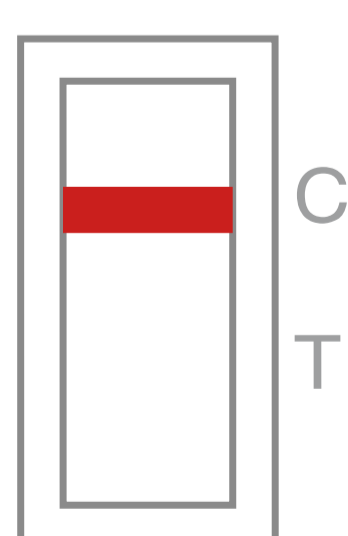
Ergebnis ablesen

Read the result

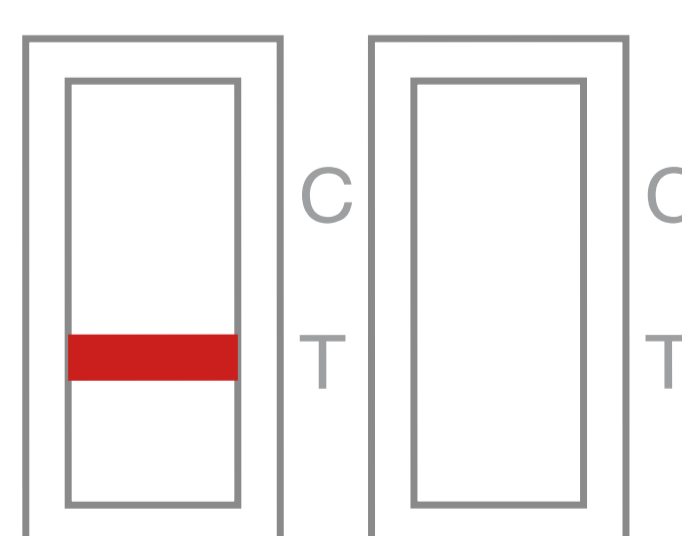
Interpretation des Testergebnisses *Result Interpretation*



Positiv
Positive



Negativ
Negative



Ungültig
Invalid



Safecare Biotech (Hangzhou) Co.,Ltd.
Building 2/203, No.18 Haishu Rd. Cangqian Sub-district,
Yuhang District, Hangzhou, Zhejiang China 311121



NIC GmbH
Erlenweg 13, 49076 Osnabrück,
Germany



COVAg-6012H